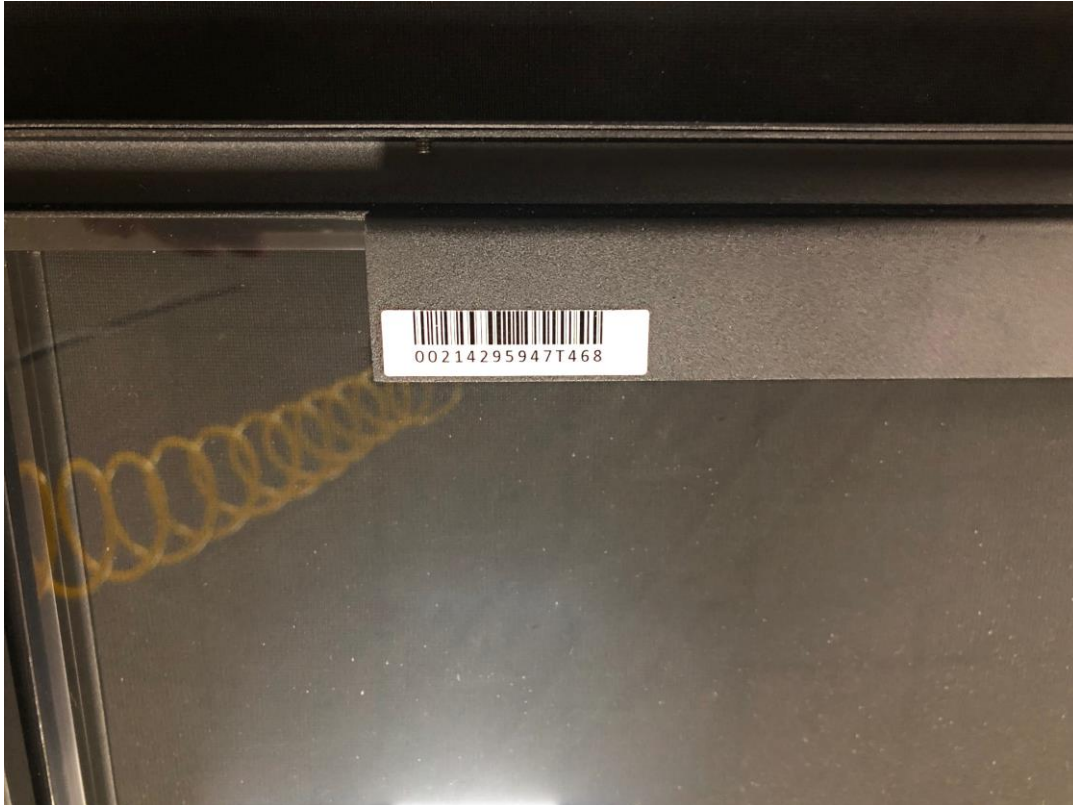


Identify and Locate Serial Numbers

In order to properly identify your TSI Touch product, you may be asked to provide a serial number. If you need to identify the type or model of product you're using, please visit the [Product Identification Guide](#).

IR Touch Solution:

The serial number is located on the back of the touch screen in the upper right or left hand corner.



PCAP Touch Solution:

The serial number is located on the back of the touch screen in the upper right or left hand corner.



If you purchased a monitor or integrated unit, your serial number will be located on the back of the display. The location and format of the serial number will be different depending on the monitor manufacturer.

Samsung:

The serial number is located directly above the bar code.



LG:

The serial number is located directly above the bar code.



NEC:

The serial number will usually end in NA.



Philips:

The serial number is usually preceded by the words Serial Number.



7. If you can't find or don't have the serial number of your product, please contact the TSI Touch Customer Service team at 802-874-0123 Option 2; email: support@tsitouch.com; or by visiting our [TSI Touch website](#) and clicking on the red "Help" icon in the lower right corner of the webpage.