

Displax - Calibration in Windows

Applies to: Displax PCAP Devices

Symptom(s): Misaligned Calibration

Affected OS: Windows 10

Prerequisite Software: [Displax Connect x64](#), or [Displax Connect x32](#)

1. To download **Displax Connect** click on the link above that matches your version of Windows.
2. Click **Next** for the next four steps.



Installation Folder



Please specify the directory where Displax Connect will be installed.

C:\Program Files\DISPLAX

Browse...

< Back

Next >

Cancel

License Agreement

Please read the following license agreement. You must accept the terms contained in this agreement before continuing with the installation.



By accepting this End User License Agreement (EULA) or by downloading or using the software you signify that you have read and agree to all the terms of this license agreement.

I. Preamble

By pressing the "I accept the licence agreement" button below, User hereby indicates User's complete and unconditional acceptance of all the terms and conditions of this Agreement. This Agreement constitutes the complete agreement between User and DISPLAX with regard to User's access, download, and/or use of Content except in the case where User has a version of the Agreement signed by both parties, in which case the signed agreement will supersede this Agreement. Except for any signed agreement between DISPLAX and user, this agreement supersedes and replaces any other agreement that was or will be presented at the time of content installation.

If User does not agree to the terms of this Agreement, User must not select the "I accept the licence agreement" button below.

II. Introduction.

Please read this End User License Agreement ("EULA") carefully before using the Software. This EULA includes DISPLAX Privacy Policy located at www.displax.com/privacy-policy/, which is incorporated by this reference into this EULA. We have included several annotations in boxes to explain or emphasize key sections.

a. Binding Agreement.

This EULA constitutes a binding agreement between you and DISPLAX S.A. and its affiliates and subsidiaries ("DISPLAX," "we," or "us"). "You" and "users" mean all users of the Software. You accept this EULA each time you access the Software. If you do not accept this EULA, you must not use the Software. If you are under 18 years of age, you represent and agree that you possess the legal consent of your parent or guardian to access and use the Software.

b. Revisions to EULA.

We may revise this EULA at any time by posting an updated version, although we will endeavor to provide you with prior notice of any material changes to this EULA. Your continued use of the Software after a change to this EULA constitutes your binding acceptance of this EULA.

- I accept the license.
 I do not accept the license.

< Back

Next >

Cancel



Start Menu shortcuts

Select the Start Menu in which you would like to create the program's shortcuts. You can also enter a name to create a new directory.



Displax Connect

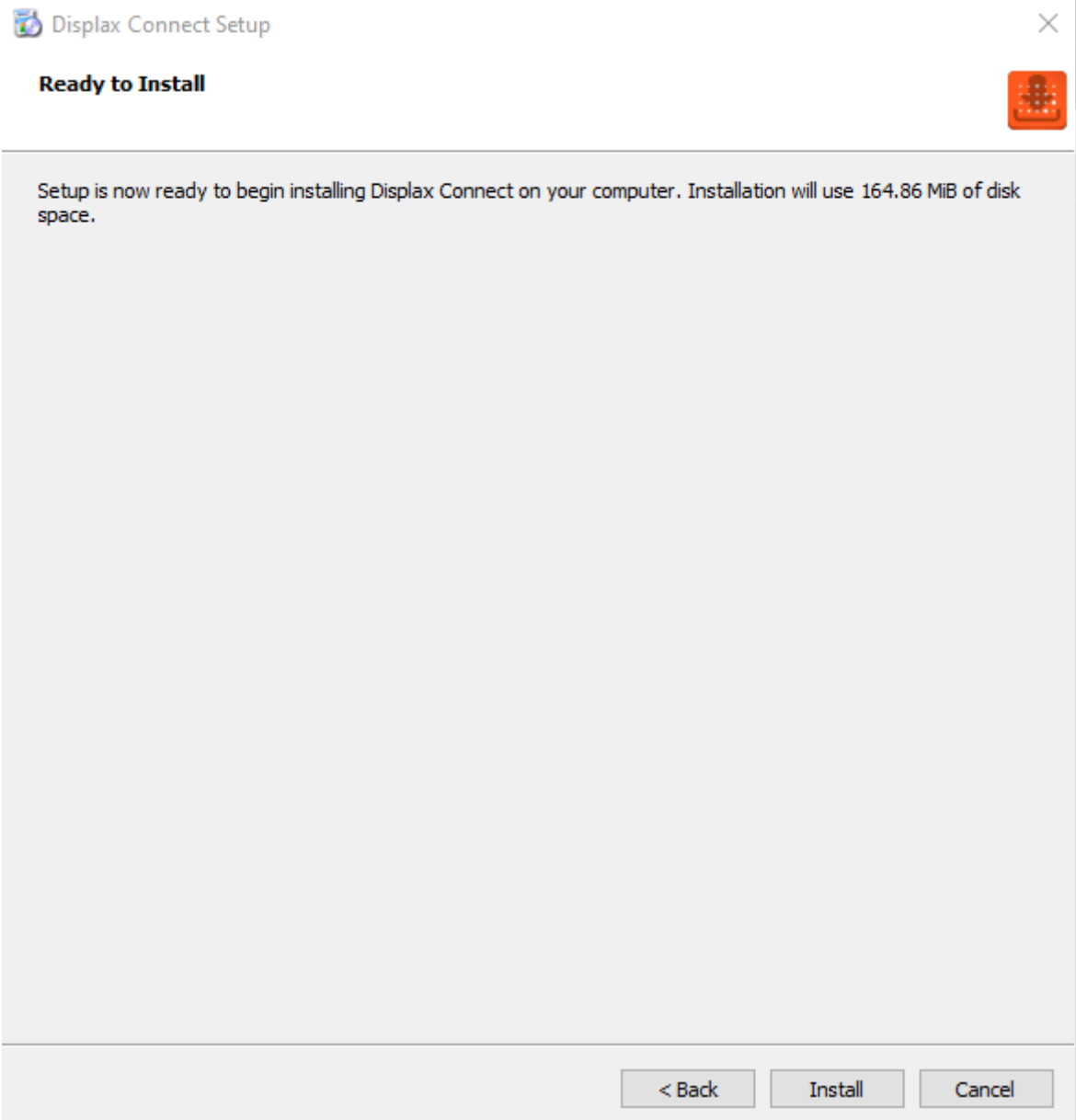
- Accessibility
- Accessories
- Administrative Tools
- Bomgar
- Maintenance
- Startup
- System Tools
- Windows PowerShell

< Back

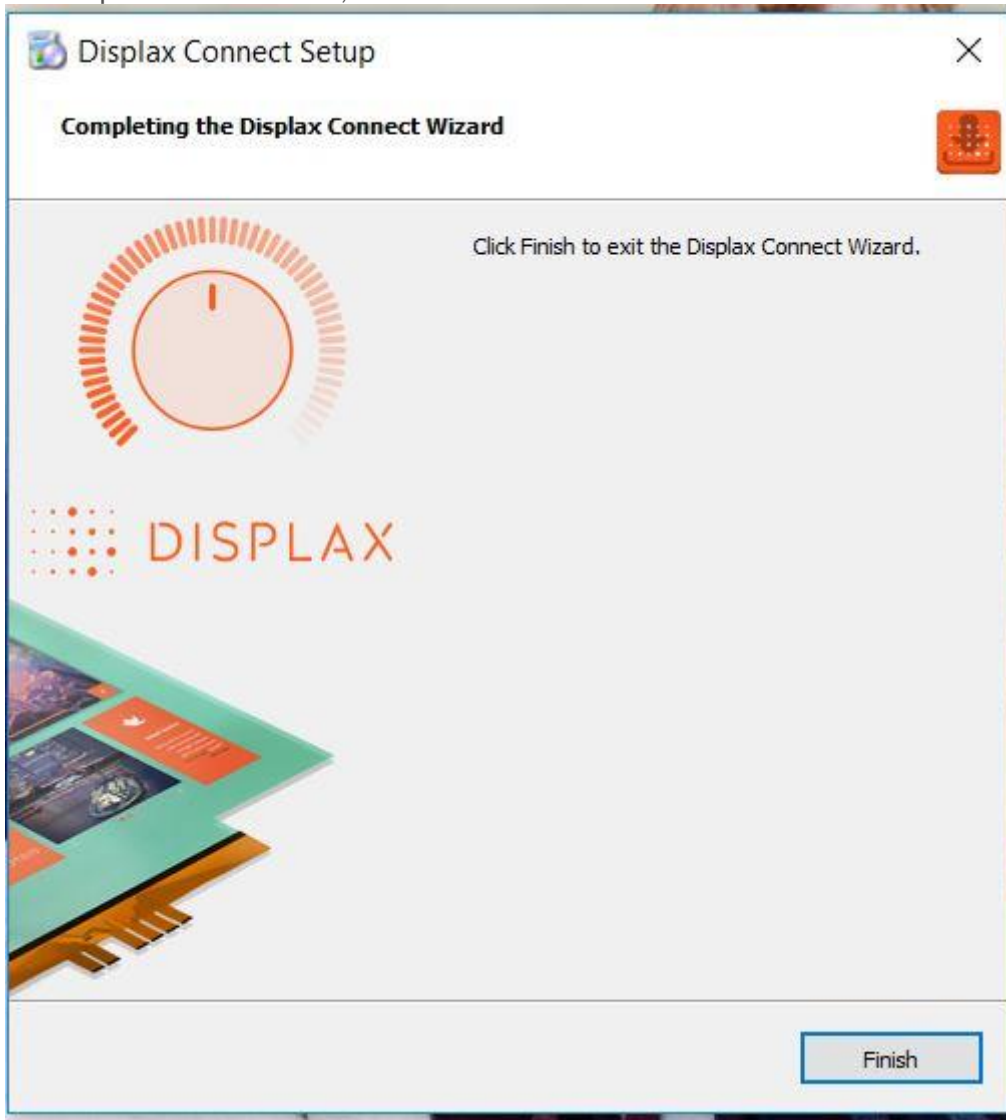
Next >

Cancel

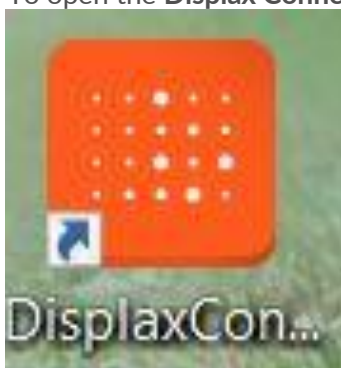
3. Click **Install**.



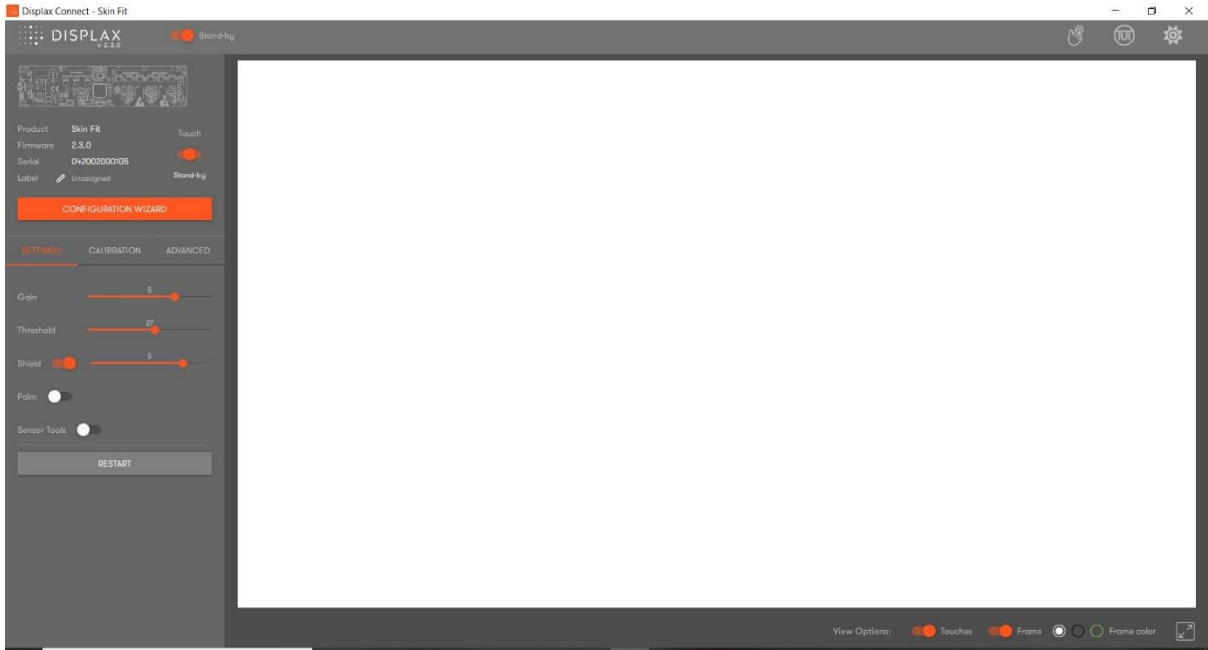
4. To complete this download, Click **Finish**.



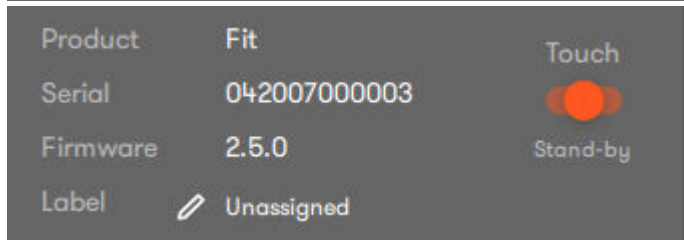
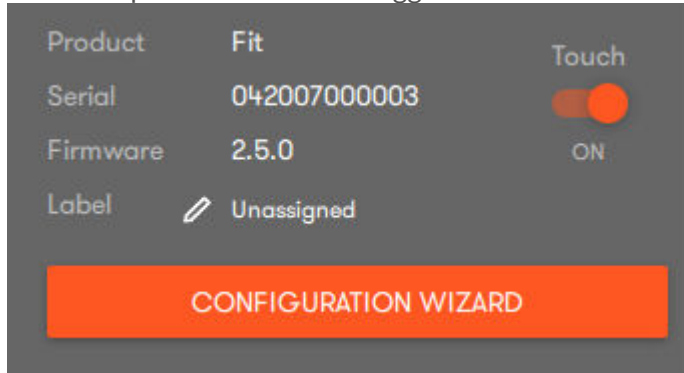
5. To open the **Displax Connect** program, double-click the icon on your desktop.

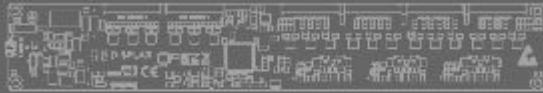


6. The following window will appear as long as the controller is properly connected. To calibrate, click the **Calibration** button.



Note:It is important the Touch Toggle is set to "ON" or "Stand-by" for Touch to be detected.





Product Skin Ultra Touch
Firmware 2.2.0
Serial 022201000076
Label Unassigned Stand-by

CONFIGURATION WIZARD

SETTINGS

CALIBRATION

ADVANCED

Screens

1

2

Zones



CALIBRATE

+

4

9

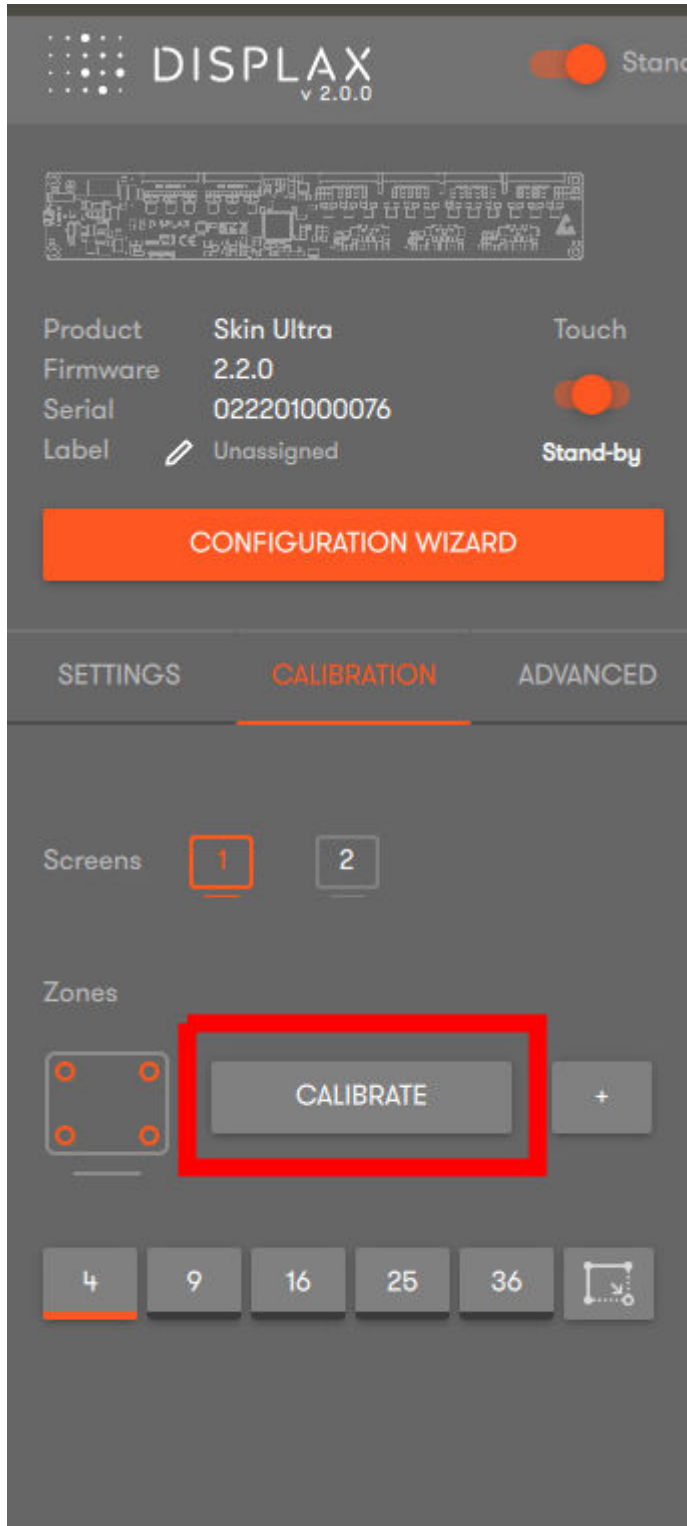
16

25

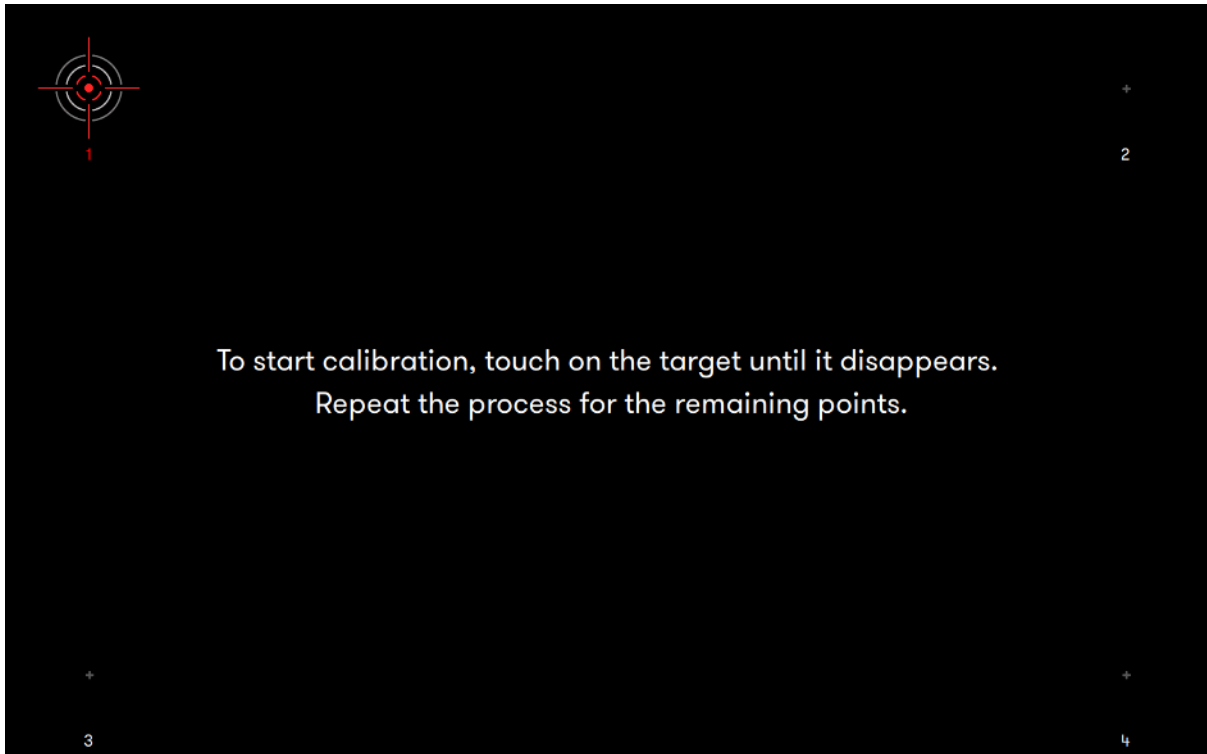
36



7. Click the **Calibrate** button.



8. The following screen will appear with a cross-hair in the upper left-hand corner. Touch the calibration point until the circle turns green. Continue the same process with the remaining three corners. You may be prompted to re-touch targets.



9. Once calibration is complete, close the **Displax Connect** program. Click **Save** when prompted. **In order for the calibration to save, you must close the program before disconnecting your touch screen.**

10. If the above steps do not resolve the issue, please contact the TSI Touch Customer Service team at 802-874-0123 Option 2; email: support@tsitouch.com; or by visiting our [TSI Touch website](#) and clicking on the red "Help" icon in the lower right corner of the webpage.