

IDS - Selecting Touch Area in Windows

Applies to: IDS Touch Frames

Symptom(s): Need for a Designated Touch Area on Touch Screen

Affected OS: Windows 10

Prerequisite Software: [PulseIRController](#)

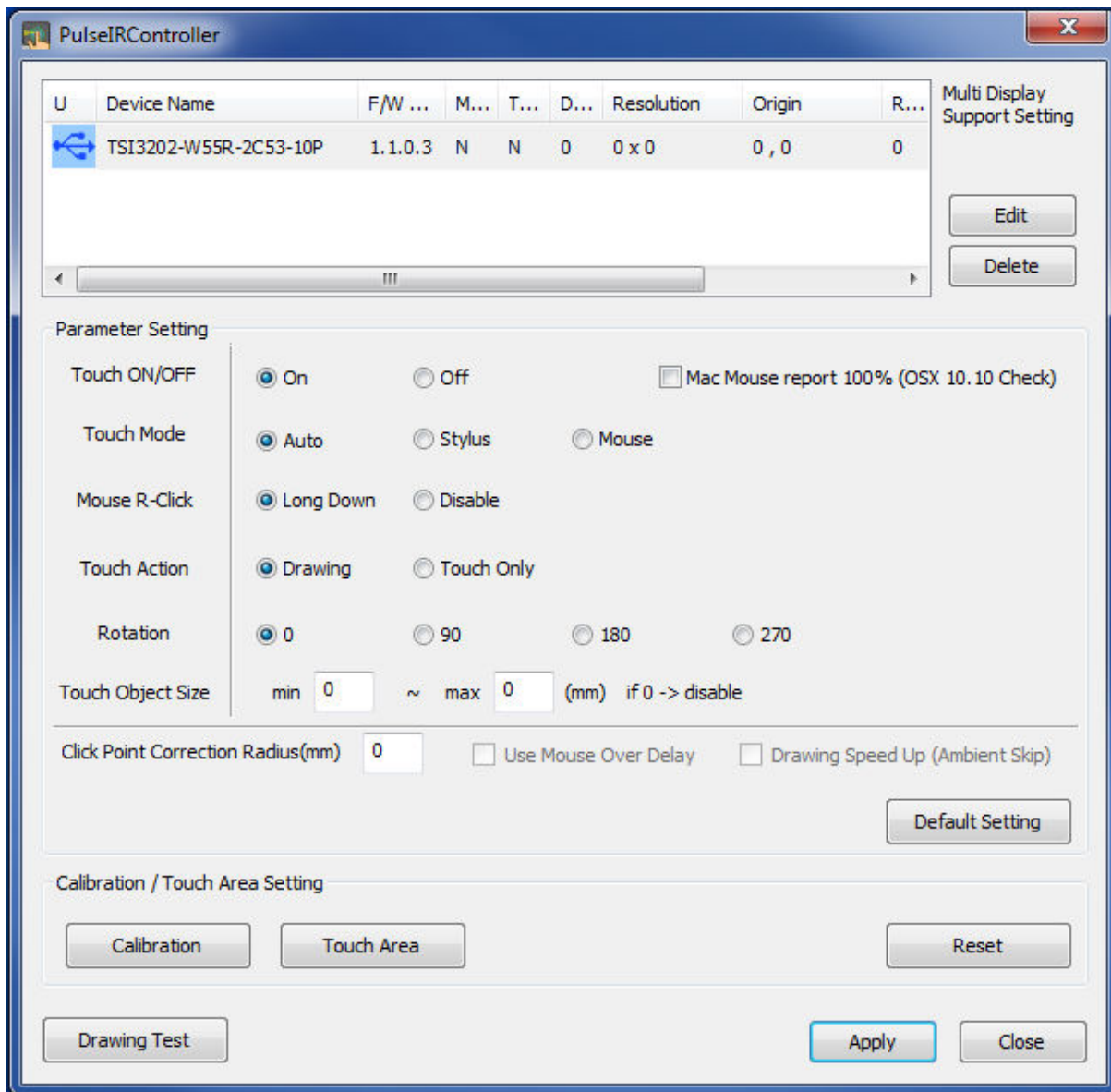
The following steps *must* be done in a Windows environment, even if your touch screen is being used with a different operating system. After connecting the touch screen USB to a Windows device, follow the steps below.

1. After downloading the PulseIRController .zip from the link above, right-click the folder and extract the contents to a location of your choice. Open the extracted folder and locate the **PulseIRController** as seen below.

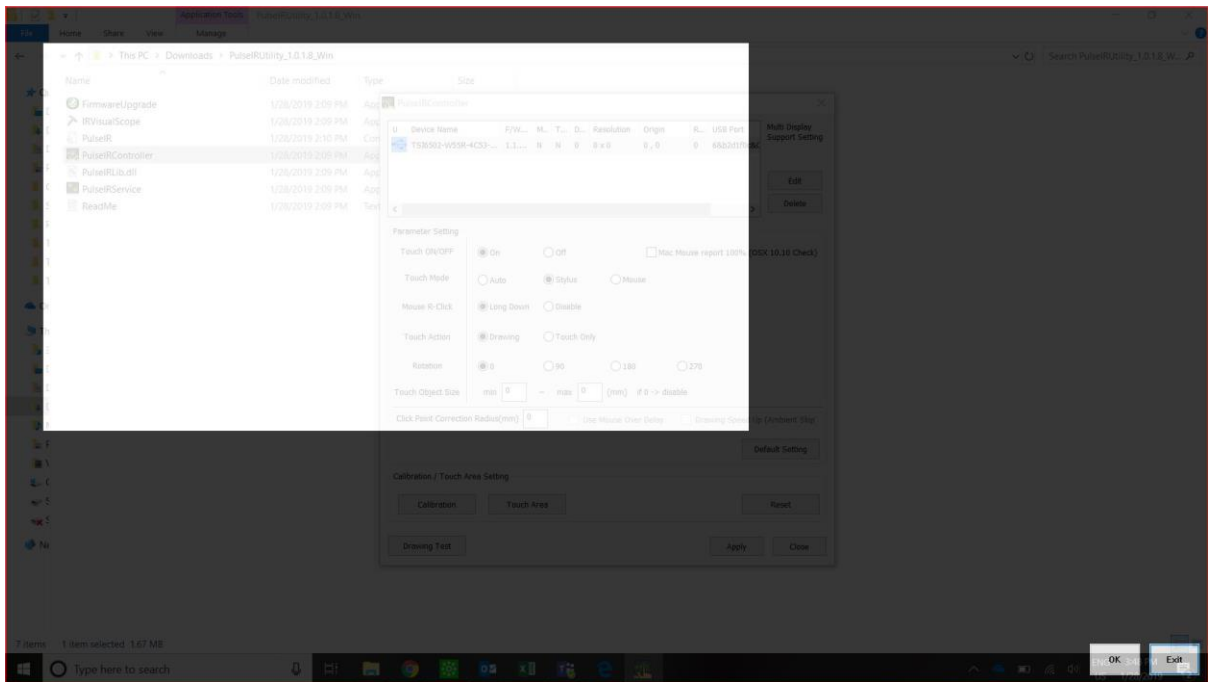
Downloads > PulseIRUtility_1.0.1.8_Win Search PulseIRUtility_1.0.1.8_W...

Name	Date modified	Type	Size
FirmwareUpgrade	1/28/2019 2:09 PM	Application	1,810 KB
IRVisualScope	1/28/2019 2:09 PM	Application	1,742 KB
PulseIR	1/28/2019 2:10 PM	Configuration setti...	1 KB
PulseIRController	1/28/2019 2:09 PM	Application	1,715 KB
PulseIRLib.dll	1/28/2019 2:09 PM	Application extens...	1,606 KB
PulseIRService	1/28/2019 2:09 PM	Application	1,617 KB
ReadMe	1/28/2019 2:09 PM	Text Document	1 KB

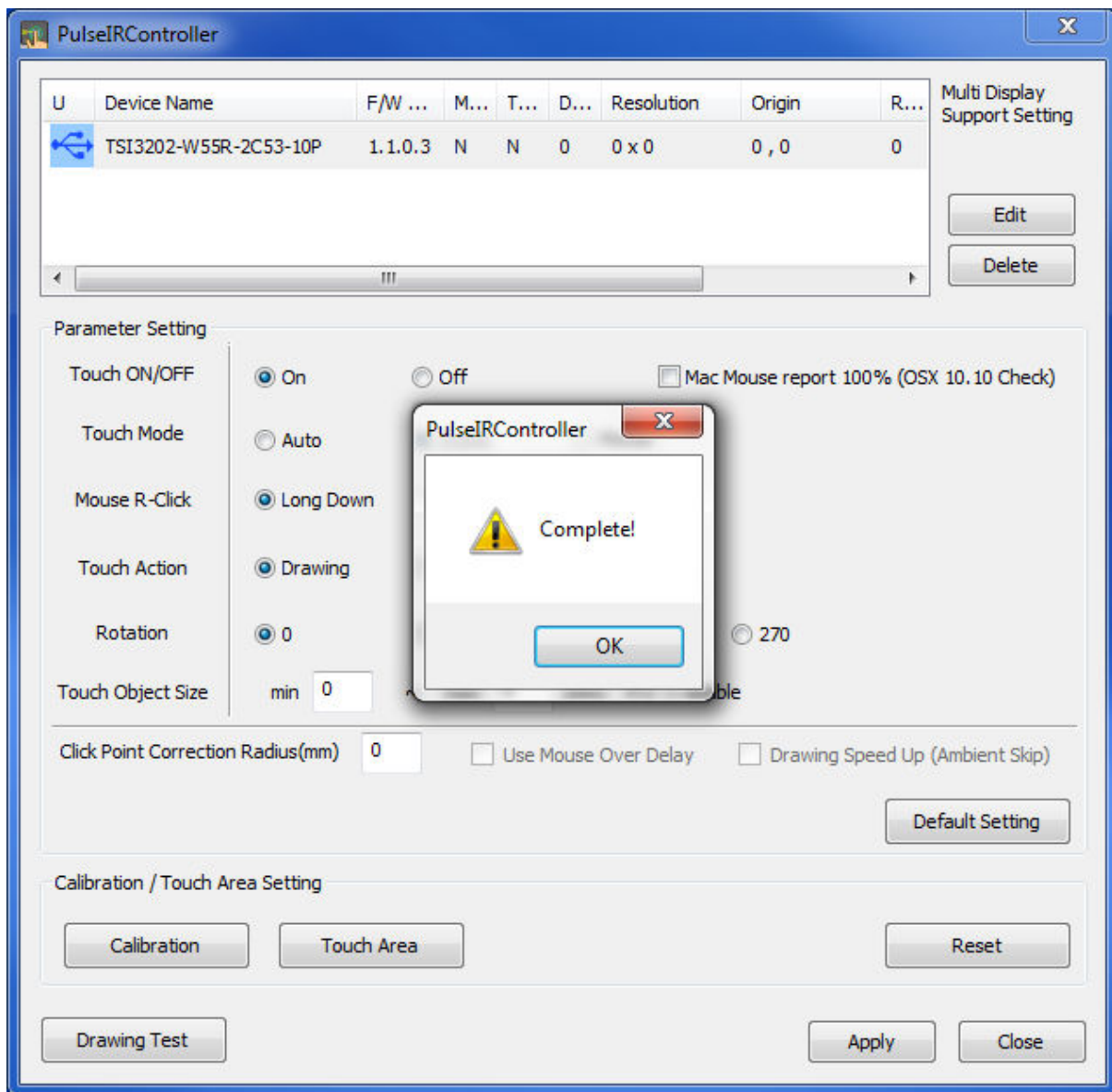
2. The PulseIRController will display the current touch screen information including firmware version and settings. If this information does not appear, please contact TSI Touch Customer Service.



3. To select a designated touch area, click on the **Touch Area** button. Place your finger and drag to create the area of touch desired. Click **OK** and then click **Apply**.



4. A message will appear confirming the changes have been saved to the touch screen.



5. Disconnect the USB cable from the Windows device and reconnect to the intended device. Touch should now function as expected in the new operating system.

6. If the above steps do not resolve the issue, please contact the TSI Touch Customer Service team at 802-874-0123 Option 2; email: support@tsitouch.com; or by visiting our [TSI Touch website](http://www.tsitouch.com) and clicking on the red "Help" icon in the lower right corner of the webpage.